



askon

Redefining
Washroom Hygiene
since 1985



OUR PRODUCT RANGE



- HAND DRYERS
- URINAL SENSORS
- SENSOR FAUCETS
- STAINLESS STEEL PANELS
- SHOE POLISH MACHINES
- SOAP & SANITIZER DISPENSERS
- PAPER TOWEL & TISSUE PAPER DISPENSERS
- BABY CHANGING STATIONS

OUR SET UP



PRODUCT ASSEMBLY



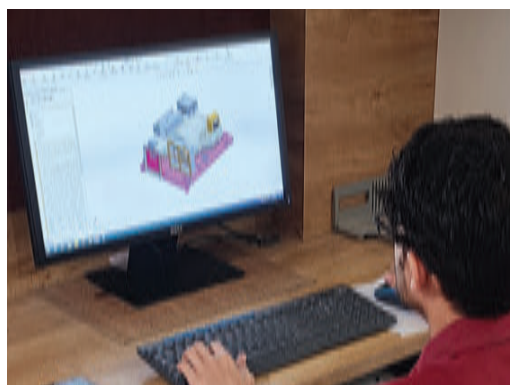
R&D



ELECTRONICS ASSEMBLY



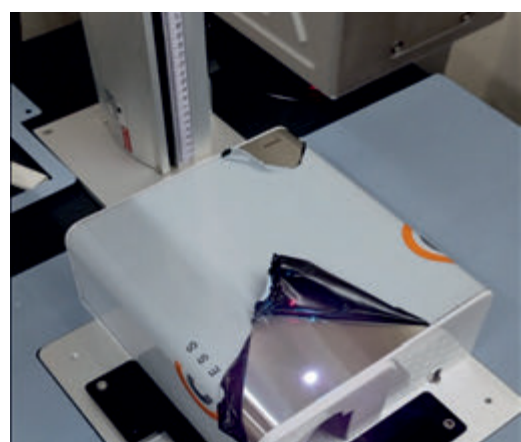
PRODUCT ASSEMBLY



PRODUCT DESIGN



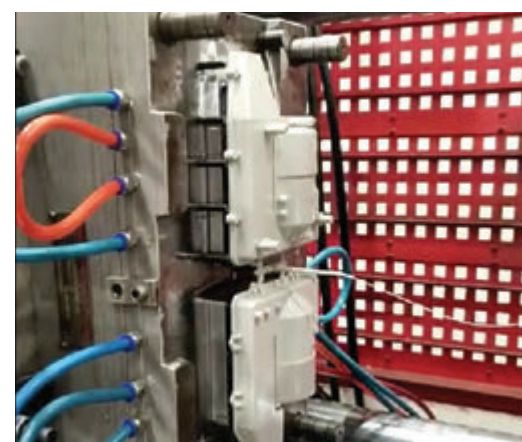
MOULD MAKING



LASER MARKING



QC & TESTING



INJECTION MOULDING

SOME OF OUR ESTEEMED CLIENTS

askon



Model : ASH-VJ (G)

WHY CHOOSE askon?



35+ YEARS OF EXPERTISE

Benefit from our extensive experience in sensor-operated washroom products, a testament to our industry leadership.



TRUSTED BRAND

Leading companies, architects, and consultants trust us for our quality and reliability.



MADE IN INDIA

Range of locally manufactured high-quality products.



PAN INDIA PRESENCE

Our widespread network ensures timely assistance and support across the country.



SAFETY ABOVE ALL

User safety drives our designs, ensuring secure experiences.



CONTINUOUS IMPROVEMENT

We constantly incorporate latest advancements in products and processes to exceed your evolving expectations.



COMPREHENSIVE SOLUTION

As India's sole integrated solution provider, we offer a unique combination of design, manufacturing and service.



PREMIUM QUALITY

Use of premium materials for our products for unmatched performance and longevity.

DUAL JET



ASH-MJ3

SALIENT FEATURES



**Heater & Motor
Control Switches**



**Brushless
DC motor**



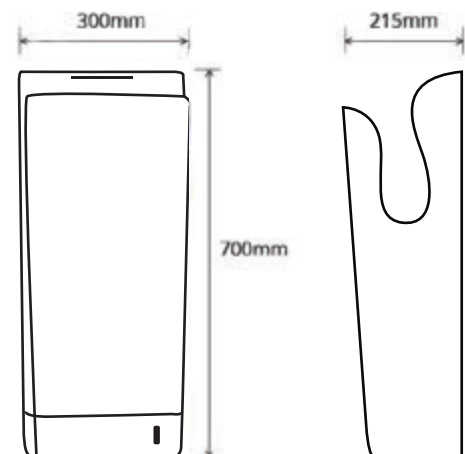
HEPA Filter



Water tray

PRODUCT SPECIFICATIONS:

- **Power Supply:** 230 VAC, 50 Hz, Single Phase
- **Air Speed:** 100 m/s
- **Motor Type:** 33000 RPM, Brushless DC
- **Rated Power:** 700-900W (Heater OFF), 1850-2050W (Heater ON)
- **Drying Time:** 12 Seconds
- **Timing Protection:** 20 sec auto-cut off
- **Operation:** Fully automatic with IR sensors
- **Drip Proof:** IPX4
- HEPA Filter removes 99% dust and micro-organisms from intake air
- **Material:** Polycarbonate
- **Noise Level:** 78 db @ 1 mtr
- **Size:** H 700 x W 300 x D 215 mm
- Equipped with water tray, motor speed control and heating coil ON / OFF switches



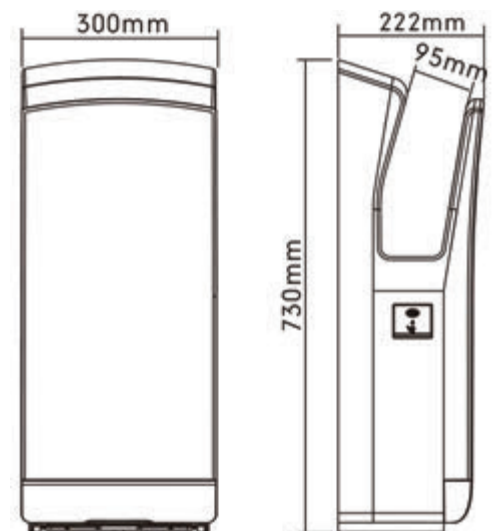
STAINLESS STEEL DUAL JET



ASH-MJ6-SS

PRODUCT SPECIFICATIONS:

- **Power Supply:** 230 VAC, 50 Hz, Single Phase
- **Air Speed :** 95 m/s
- **Motor Type:** 33000 RPM, Brushless DC
- **Rated Power:** 800W - 1650W
- **Drying Time:** 8-10 Seconds
- **Timing Protection:** 30 seconds auto-cut off
- **Operation:** Fully automatic with IR sensors
- **Drip Proof:** IPX4
- HEPA Filter removes 99% dust and micro-organisms from in take air
- **Material:** Stainless Steel # 304 + ABS Plastic
- **Stainless Steel Cover Thickness :** 1.2 mm
- **Noise Level:** 72 db @ 1 mtr
- **Unit Size:** H 730 x W 300 x D 222 mm
- Equipped with water tray to prevent water dripping on the floor
- Intelligent heating system to control the air heating



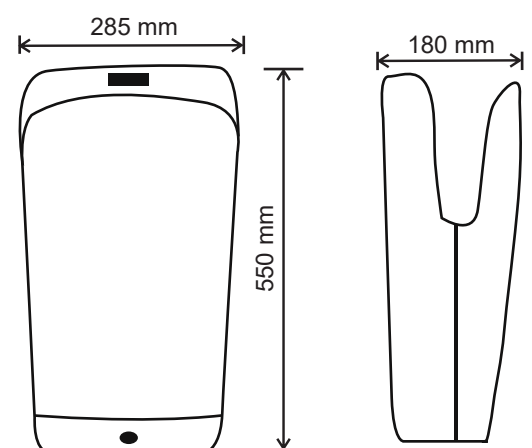
COMPACT DUAL JET



ASH-MJ4

PRODUCT SPECIFICATIONS:

- **Material:** Anti-Bacterial and Fire Retardant ABS
- **Power Supply:** 230 VAC, 50 Hz, Single Phase
- **Air Speed:** 90 m/s
- **Motor Type:** 31000 RPM, Brushless DC
- **Rated Power:** 700-900W (Heater OFF), 1600-1800 W (Heater ON)
- **Drying Time:** 20 Seconds
- **Timing Protection:** 30 seconds auto-cut off
- Heating coil and motor protected with thermal fuse and thermal cut-off
- **Operation:** Fully automatic with IR sensors
- **Drip Proof:** IPX4
- Equipped with HEPA filter to remove 99% dust and micro-organisms from intake air
- Equipped with water tray and water level indicator LED which blinks when the tray is full
- **Noise Level:** 75 db @ 1 mtr
- **Size:** H 550 x W 285 x D 180 mm



INSTAJET™ PRO SERIES



AS-45-IR-G2-PRO-PW

Hand Dryer with fire
retardant plastic cover



AS-45-IR-G2-PRO-SB

Stainless steel hand dryer
with brush finish cover



AS-45-IR-G2-PRO-SM

Stainless steel hand dryer
with mirror finish cover



AS-45-IR-G2-PRO-W

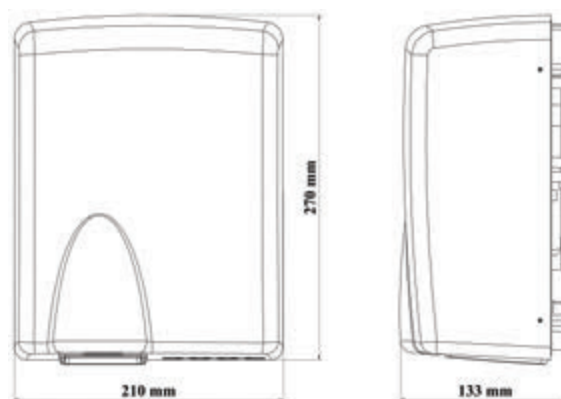
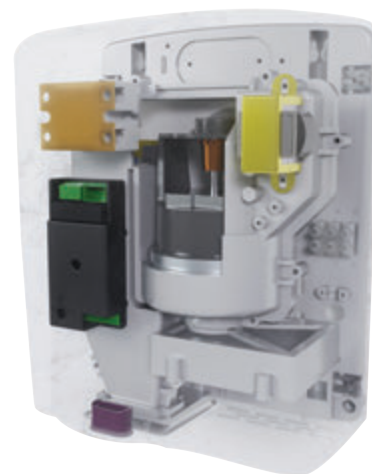
Hand dryer with white
enamel coating steel cover



INSTAJET™ PRO SERIES

PRODUCT SPECIFICATIONS:

- **Motor:** 40,000 RPM Heavy-duty brushed motor
- Operates automatically with IR sensors
- Uses Solid State relay for extended operational life
- **Outer Cover:**
 - Deep drawn Stainless Steel # 304 with brush finish for model : AS-45-IR-G2-SB
 - Deep drawn Stainless Steel # 304 with mirror finish for model : AS45-IR-G2-SM
 - White Fire Retardant ABS for model: AS-45-IR-G2-PW
 - Steel cover with white enamel coating for model: AS-45-IR-G2-W
- The motor and heating coil are protected with a thermal fuse and thermal cut-off
- **Construction:** Made from high-impact resistant engineering plastics, flame & heat retardant
- **Power Supply:** 230VAC, 50 Hz, Single Phase
- **Rated Power:** 1200 W (with highest motor speed setting and heater ON)
- **Drip Proof** IP21
- **Air Speed:** 110 m/s
- **Air volume:** 450 m³/hr
- **Noise Level @ 1 metre:** 70 db - 80 db (depending on motor speed setting)
- **Drying time:** 10 - 12 seconds
- Heating Coil ON/OFF switch
- Motor speed adjustable with switch
- **Size:** H 270 x W 210 x D 133 mm
- Specially designed air filter & noise silencer
- **Timing Protection :** 45 seconds auto cut-off with patented safety shut-down feature to prevent misuse and vandalism of hand dryer



SAFETY SHUT DOWN FEATURE TO PREVENT MISUSE AND VANDALISM:

- After 45 seconds of continuous use, the hand dryer will enter into safety shutdown mode for 30 seconds.
- During these 30 seconds, the hand dryer will not start even if an object is present in front of the sensor.
- After 30 seconds, if the object is removed, the hand-dryer will function normally or will remain in shutdown mode.
- It is aimed at significantly reducing the machine downtime, damage and repair costs due to misuse.

V JET



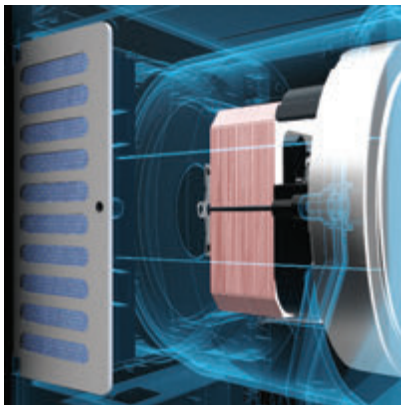
ASH-VJ (G)

V Jet Hand Dryer (Grey)

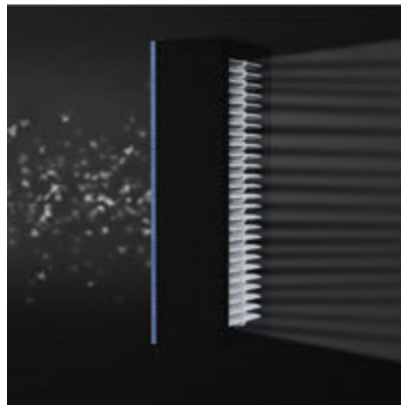


ASH-VJ

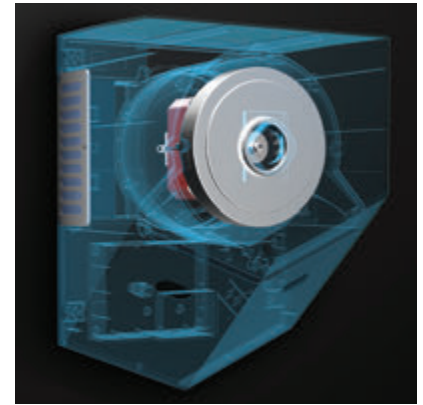
V Jet Hand Dryer (White)



Does not use heating element.
Dries hands quickly with 75%
less power consumption
per hand drying cycle



Two HEPA filters remove
99% impurities from intake
air. HEPA filters are easily
accessible from outside
without opening cover



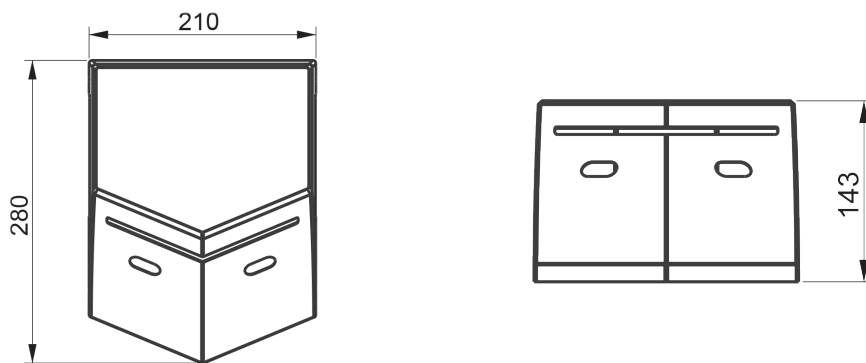
Powerful 30,000 RPM
motor generates high velocity
blades of air to dry hands
quickly



V JET

PRODUCT SPECIFICATIONS:

- **Quick drying:** Dries hands in 12 seconds with 100 m/s air blades
- **Energy Efficient:** No heating element which saves 75% energy consumption
- Equipped with two anti-bacterial HEPA filters to remove 99% impurities from air
- **Rated Power :** 500 - 1000 W (Depends on motor speed setting)
- **Motor:** 30,000 RPM brushed motor, speed adjustable with switch
- **Fire Resistant:** Made with fire retardant and anti-bacterial plastics for utmost hygiene and safety
- Equipped with solid-state relays for longer operational life compared to mechanical relays
- Motor equipped with thermal fuse and cut-off
- **Size:** H 280 x W 210 x D 143 mm
- **Noise level:** 70 - 80 db (Depends on motor speed setting)
- **Operation:** Fully automatic with two IR sensors
- **Power Supply:** 230VAC, 50Hz, Single phase



SAFETY SHUT DOWN FEATURE TO PREVENT MISUSE AND VANDALISM:

- After 45 seconds of continuous use, the hand dryer will enter into safety shutdown mode for 30 seconds.
- During these 30 seconds, the hand dryer will not start even if an object is present in front of the sensor.
- After 30 seconds, if the object is removed, the hand-dryer will function normally or will remain in shutdown mode.
- It is aimed at significantly reducing the machine downtime, damage and repair costs due to misuse.



SLIMJET™ PRO SERIES



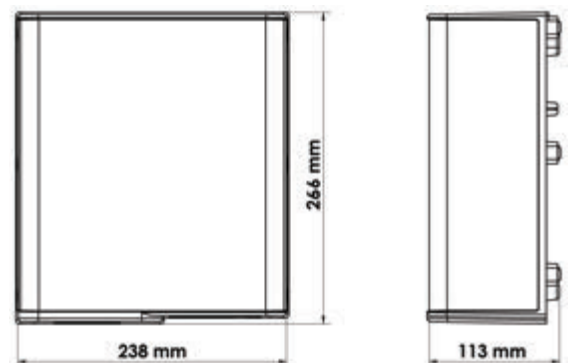
AS 65-IR (SF)

PRODUCT SPECIFICATIONS:

- **Motor:** Heavy duty high speed brushed motor, 25000 RPM
- Operates automatically with IR sensors
- Uses solid state relay for extended operating life
- The motor and heating coil are protected with thermal fuse and thermal cut off
- **Outer Cover:**
Stainless Steel # 304 + FR ABS plastic
- **Construction:** Made from high impact resistant engineering plastics, flame retardant UL-94 V-0
- **Impeller:** Curved blade impeller made from high impact polycarbonate
- **Power Supply:** 230VAC, 50 Hz, Single Phase
- **Rated Power:** 900 W **Rated Current:** 3.91 A
- **Air Speed:** 90 m/s • **Air volume:** 245 m³/hr
- **Noise Level @ 1 mtr:** 70 db
- **Size:** H 266 x W 238 x D 113 mm
- **Operation:** Fully automatic with two IR sensors
- **Timing Protection :** 45 seconds auto cut-off with patented safety shut-down feature to prevent misuse and vandalism of hand dryer



Energy Efficient:
Every hand drying cycle consumes
only 0.003 units of power



SINGLE BLOWER



AS 45-IR (W)

Steel cover with white enamel coating



AS 45-IR (SB)

Stainless steel cover with brush finish



AS 45-IR (SM)

Stainless steel cover with mirror finish

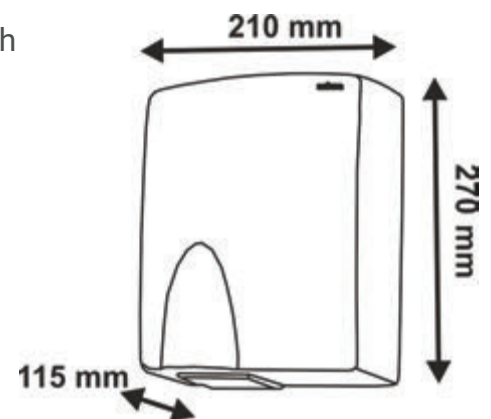


AS 45-IR (PW)

Fire retardant plastic cover

PRODUCT SPECIFICATIONS:

- Fully automatic with IR Sensor
- **Outer Covers:**
 - Deep drawn Stainless Steel # 304 with brush finish for model AS 45-IR (SB)
 - Deep drawn Stainless Steel # 304 with mirror finish for model AS 45-IR (SM)
 - White Fire Retardant ABS for model AS 45-IR (PW)
 - Steel cover with white enamel coating for model AS 45-IR (W)
- Internal components of fire retardant polycarbonate plastics with anti-microbial additives for utmost hygiene & safety
- **Rated Power** :1050 W • **Noise Level @ 1 mtr:** 70 db
- **Power Supply:** 230 VAC, 50Hz, Single Phase
- **Heating Coil** : Spiral wound kanthal heating element.
- **Motors** : Brushless AC motor, 2850 RPM
- **Maximum air temperature at outlet** : 70°C
- **Size:** H 270 x W 210 x D 115 mm
- **Timing Protection** : 45 seconds auto cut-off with patented safety shut-down feature to prevent misuse and vandalism of hand dryer



TWIN BLOWER



AS 25-IR (SB)

Stainless steel cover
with brush finish



AS 25-IR (SM)

Stainless steel cover
with mirror finish

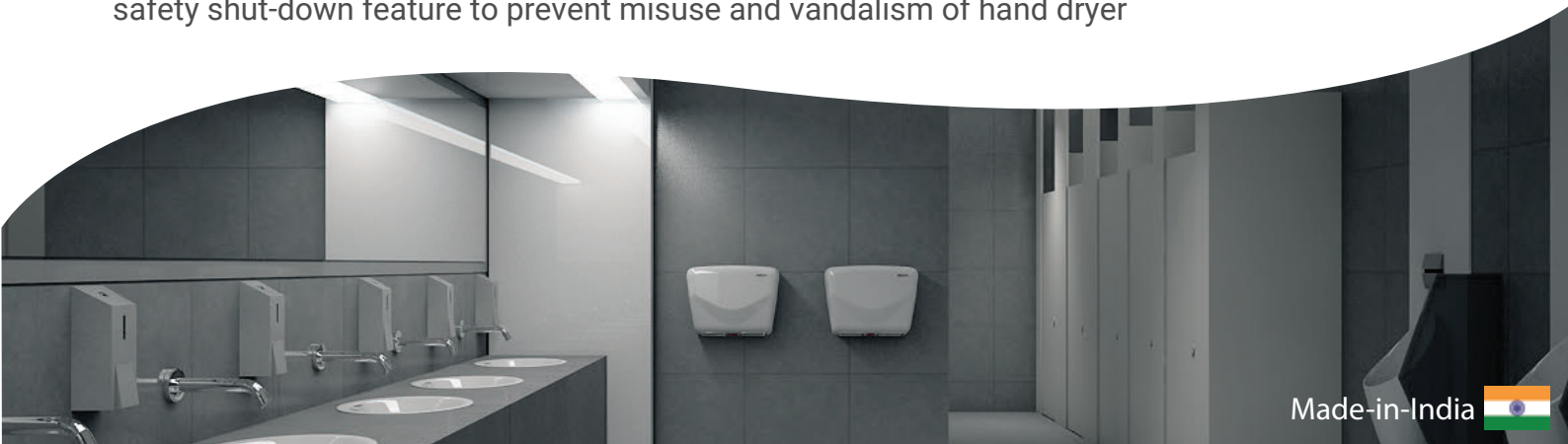
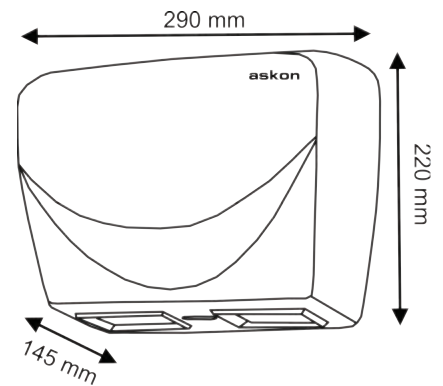


AS 25-IR (W)

Steel cover with
white enamel coating

PRODUCT SPECIFICATIONS:

- Fully automatic with IR Sensor
- **Outer Covers:**
Deep drawn Stainless Steel # 304 with brush finish for model AS 25 - IR (SB)
Deep drawn Stainless Steel # 304 with mirror finish for model AS 25 - IR (SM)
Steel cover with white enamel coating for model AS 25 - IR (W)
- **Size:** H 220 x W 290 x D 145 mm
- **Type:** Twin Blower with two motors and heating coils
- **Power:** 1500W
- **Power supply:** 230VAC, 50 Hz, Single Phase
- **Heating element:** Two spiral wound Kanthal make with resetting thermal cut-offs and thermal fuse enhanced safety
- **Impellers:** Two aluminum impellers, Dynamically Balanced
- **Motor:** Two Shaded pole induction motors with thermal fuses for enhanced safety, 2850 RPM
- **Max Air temperature at outlet :** 70° C
- **Timing Protection :** 45 seconds auto cut-off with patented safety shut-down feature to prevent misuse and vandalism of hand dryer



SLIMJET™ SERIES



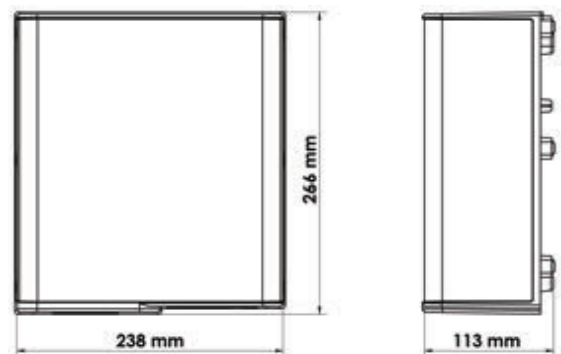
AS 55-IR (SF)



AS 55-IR (W)

PRODUCT SPECIFICATIONS:

- **Motor:** High speed brushed motor, 15000 RPM
- Operates automatically with IR sensors
- The motor and heating coil are protected with thermal fuse and thermal cut off
- **Outer Cover:**
Stainless Steel # 304 + ABS plastic for model AS 55-IR (SF)
ABS plastic cover for model AS 55-IR (W)
- **Construction:** Blower and impeller in polycarbonate, all other parts in ABS plastic
- **Power Supply:** 230VAC, 50Hz, Single Phase
- **Rated Power:** 850 W
- **Rated Current:** 3.69 A
- **Noise Level @ 1 mtr:** 70 db
- **Air Speed:** 70 m/s
- **Air volume:** 180 m³/hr
- **Size:** H 266 x W 238 x D 113 mm
- **Timing Protection :** 45 seconds auto cut-off with patented safety shut-down feature to prevent misuse and vandalism of hand dryer



COMPACT PLASTIC

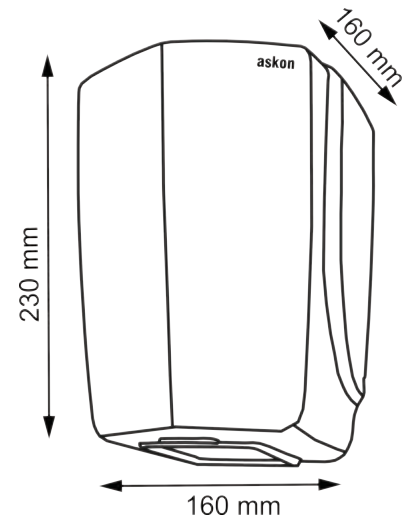


AS 15-IR (W)

ABS Plastic Hand Dryer
in white colour

PRODUCT SPECIFICATIONS:

- **Power Supply:** 230 V, 50Hz, Single Phase
- **Rated Power:** 700 W
- **Outer Cover:** ABS Plastic
- **Construction:** Fire retardant Polycarbonate for extra durability and safety
- **Noise Level @ 1 mtr:** 70 db
- **Motor:** Brushless AC Motor, 2850 RPM.
- Spiral wound Kanthal heating element.
- Maximum air temperature at outlet: 70°C
- Aluminium Impeller, dynamically balanced
- Heavy duty design suitable for installation at all types of facilities.
- **Timing Protection :** 45 seconds auto cut-off with patented safety shut-down feature to prevent misuse and vandalism of hand dryer



ECOFAST COMPACT

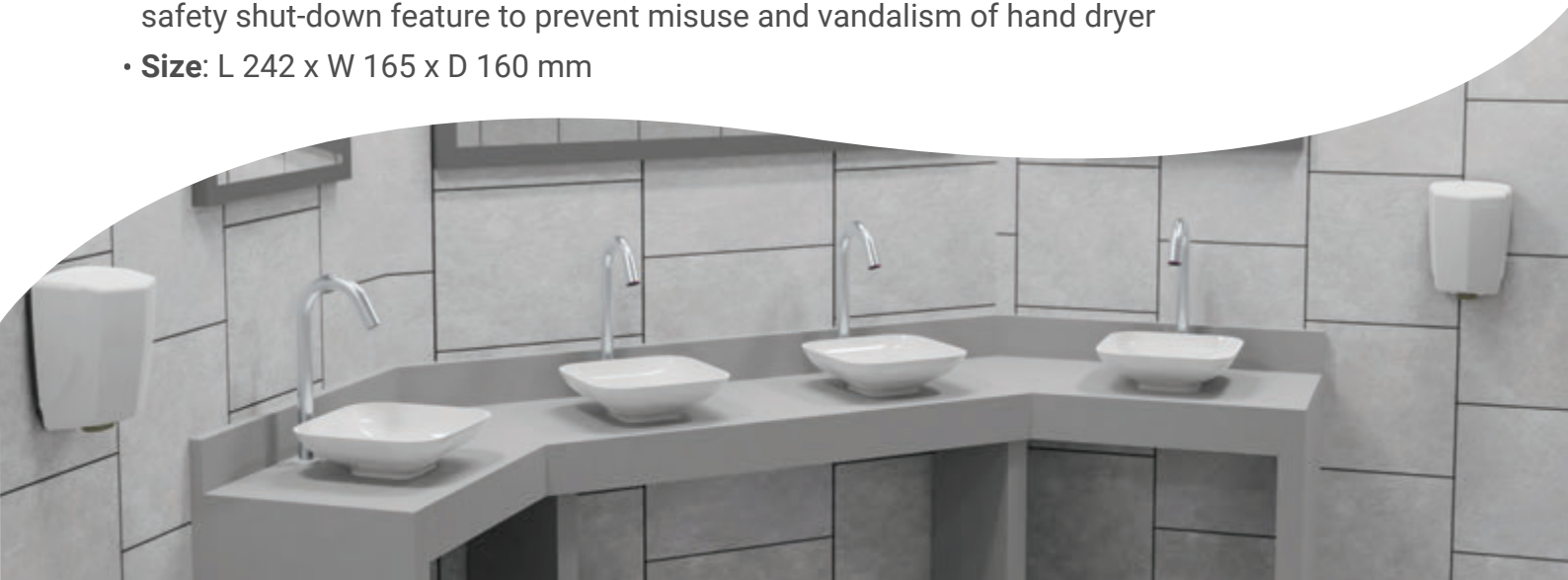
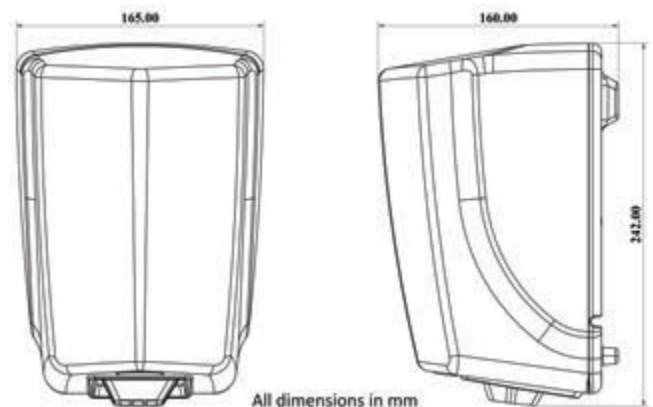


AS 10-IR (W)

ABS Plastic Hand Dryer
in white colour

PRODUCT SPECIFICATIONS:

- **Power Supply:** 230 V, 50Hz, Single Phase
- **Rated Power:** 400 W
- **Outer Cover:** ABS Plastic
- **Construction:** Fire retardant Polycarbonate for extra durability and safety
- **Noise Level @ 1 mtr:** 70 db
- **Motor:** Brushed DC Motor, 6500 RPM
- Spiral wound Kanthal heating element.
- Maximum air temperature at outlet: 70°C
- Aluminium Impeller, dynamically balanced
- **Timing Protection :** 45 seconds auto cut-off with patented safety shut-down feature to prevent misuse and vandalism of hand dryer
- **Size:** L 242 x W 165 x D 160 mm



askon

Experience
Hygiene

Experience
Quality

Experience
askon

CONTACT US TODAY!



info@askonhygiene.com



www.askonhygiene.com



+91-99303 89999



120, Keytuo Industrial Estate, Kondivita Road, Andheri (East), Mumbai-400059